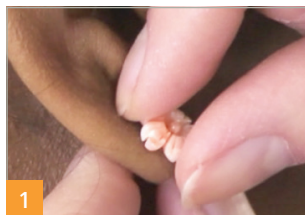


8000Q2

SpO₂ Ear Clip Sensor

Use **ONLY** with compatible Nonin Medical pulse oximeter monitors.

1. Remove any jewelry from the ear prior to attaching the clip sensor.
2. Wash and dry the ear lobe to remove any make-up or heavy lotions.
3. Vigorously rub the ear lobe for five seconds to stimulate blood flow.
4. Gently squeeze the sensor to open.



5. Slide onto the lobe, placing the emitter and detector elements completely onto the center of ear lobe.



ADDITIONAL GUIDANCE

- A.** Check sensor position and skin at site every 6 to 8 hours.
- B.** If signal quality is low on the oximeter:
 - 1. Check connection at oximeter.
 - 2. Check that ear is warm and has good blood flow.
 - 3. Use the other ear.
- C.** Clean sensor between patients or as needed.
 - 1. Use soft cloth with 10% bleach/90% water solution (household bleach < 10% sodium hypochlorite).
 - 2. Do not use ammonium chloride-based cleaning fluids.
 - 3. Do not overextend the hinge.
 - 4. Wipe away from connector plug. Do not submerge or immerse sensor or connector plug.
 - 5. Allow to completely dry before next use.

THIS GUIDE IS FOR REFERENCE ONLY. Refer to the Instructions for Use for complete information, warnings, cautions and specifications for the product you are using.

Visit nonin.com for more information and video tutorials.



nonin.com/sensors

Nonin Medical, Inc.
13700 1st Avenue North
Plymouth, MN 55441-5443 • USA
Tel: +1.763.553.9968
+1.800.356.8874
Fax: +1.763.577.5521
E-mail: info@nonin.com

Nonin Medical B.V.
Prins Hendriklaan 26
1075 BD Amsterdam • Netherlands
Tel: +31 (0)13-79 99 040
Fax: +31 (0)13-79 99 042
E-mail: infointl@nonin.com