

Dräger Mobile Printer

de

Gebrauchsanweisung

 2 - 3

en

Instructions for Use

 4 - 5

fr

Notice d'utilisation

 6 - 7

es

Instrucciones de uso

 8 - 9

pt

Manual de Instruções

 10 - 11

it

Istruzioni per l'uso

 12 - 13

nl

Gebbruiksaanwijzing

 14 - 15

da

Brugsanvisning

 16 - 17

fi

Käyttöohjeet

 18 - 19

no

Bruksanvisning

 20 - 21

sv

Bruksanvisning

 22 - 23

lt

Naudojimo vadovas

 24 - 25

pl

Instrukcja obsługi

 26 - 27

ru

Руководство по эксплуатации

 28 - 29

hr

Upute za uporabu

 30 - 31

sl

Navodilo za uporabo

 32 - 33

sk

Návod na použitie

 34 - 35

cs

Návod na použití

 36 - 37

bg

Ръководство за работа

 38 - 39

ro

Instrucțiuni de utilizare

 40 - 41

hu

Használati útmutató

 42 - 43

el

Οδηγίες Χρήσης

 44 - 45

tr

Kullanma talimatı

 46 - 47

For your Safety

Strictly follow the Instructions for use

Any use of the device requires full understanding and strict observation of these instructions. The device is only to be used for purposes specified here.

Maintenance

Repair of the device may only be carried out by trained service personnel. We recommend that all repairs to be carried out by Dräger Safety. Only authentic Dräger spare parts may be used for maintenance. Observe chapter "maintenance".

Accessories

Do not use accessory parts other than those in the order list.

Safe coupling with electrical devices

Devices which are not mentioned in these Instructions for Use can only be coupled electronically after consultation with the manufacturers or an expert.

Not for use in areas of explosion hazard

The device is neither approved nor certified for use in areas where combustible or explosive gas mixtures are likely to occur.

Liability for proper function or damage

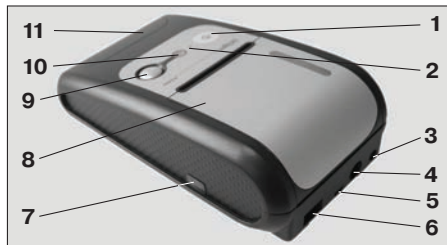
The liability for the proper function of the device is irrevocably transferred to the owner or operator to the extent that the device is serviced or repaired by personnel not employed or authorized by Dräger Safety or if the device is used in a manner not conforming to its intended use. Dräger Safety cannot be held responsible for damage caused by non-compliance with the recommendations given above. The warranty and liability provisions of the terms of sale and delivery of Dräger Safety are likewise not modified by the recommendations given above.

Intended Use

The Dräger Mobile Printer is a handy device for the protocolling of:

- measurement results obtained from a special equipped diagnostic Dräger product (e.g. Dräger Alcotest),
- data of a function test from a mobile gas detection instruments connected with the Dräger Bumpstest Station.

What is what



- | | |
|-------------------|----------------------|
| 1 On/off button | 2 LED |
| 3 charging socket | 4 PS2 interface |
| 5 USB interface | 6 RS232 interface |
| 7 IR interface | 8 top lid |
| 9 Open button | 10 Optical interface |
| 11 battery box | |

Operation

Inserting/charging the batteries

- Open the battery box at the front end of the device and insert four alkaline batteries or NiMH batteries in correct polarity use.
- Close the battery box.

Loading the paper

- Open the lid on the top side of the device with the open-button and insert the paper roll (see order list) into the magazine.
 - Put the end of the paper into the output slot and close the lid until it clicks.
- Paper change takes place in the same way.

Connecting the battery charger (optional)

- Connect the battery charger (order no. 83 16 991) to main supply.
- Put the plug into the charging socket of the Dräger Mobile Printer.

NOTE: Only use the battery charger when NiMH rechargeable batteries are inserted!

Switching device on/off

- Press the green button on the top of the device for two seconds to switch on and off, respectively.

Interfaces

- | | | |
|----------|---|--------------------------------|
| USB | – | Interface to PC |
| PS2 | – | Keyboard |
| RS232 | – | Extension e.g. network adapter |
| Infrared | – | Measuring instrument interface |
| Optical | – | Measuring instrument interface |

System ability

The measuring instruments have to be positioned or connected according to their interface functionalities with the interfaces of the Dräger Mobile Printer. The result of measurement as well as additional data e.g. test number, device serial number, measurement time, date, time and language version are transferred. Up to 700 Bumpstest data sets can be stored optionally. When the storage capacity is full, depending on the configuration of the Dräger Mobile Printer, the oldest data will be overwritten, or the data should be actively deleted prior to further storage.

Maintenance

- | | |
|-------------|---|
| Paper roll: | must be replaced when red stripe appears |
| batteries: | see table "Status, Signals, Effects and Remedy" on page 5 |

Disposing of the Device



EU-wide regulations on the disposal of electrical and electronic devices as defined in the EU directive 2002/96/EL and national laws pertaining to this device were adopted in August 2005.

Special collection and recycling possibilities will be provided for private households. Since this device is not registered for use in private households, it must not be disposed of with private household waste. The device can be returned for disposal to your national Dräger Safety sales organization, which will be pleased to answer any questions you may have relating to disposal.

Technical Data

Environmental conditions	
For operation:	
Temperature	-5 to 50 °C
Humidity	100 %, not condensing
Atmospheric pressure	600 to 1050 mbar
For storage	
Temperature	-20 to 50 °C, short time (4h) -40 to 70 °C
Humidity	100 %
Atmospheric pressure	600 to 1050 mbar

Dimensions	110 mm x 60 mm x 205 mm (W x H x D)
Weight	about 400 g
Power supply	
Batteries	4 x 1.5 V Type Alkaline (Mignon, LR6, AA) 4 x 1.5 V Type NiMH (Mignon, LR6, AA)
Components	
Printer	Thermoprinter
Printer paper	Thermopaper, width 58 mm
CE marking	Electromagnetic compatibility (Directive 2014/30/EU)

Order List

Dräger Mobile Printer	83 19 310
Printer paper (5 rolls)	83 19 002
Long term stable printer paper with edge printing	83 18 461
Alkaline battery (1 piece)	13 35 804
Rechargeable battery NiMH (1 piece)	18 90 092
Power supply for charging NiMH batteries inside of printer	83 16 991
Network adapter	83 19 348
PC connection cable	83 18 657

Status, Signals, Effects and Remedy

No.	Status	Output Signal (Simultaneous signals possible)	State	Effects	Necessary actions
Buzzer (dark-grey), green LED (light-grey)					
1	Switch on		device/process OK	Device is ready	None
2	Data saved (Bumpstest)		device/process OK	Device ready to operate	None
3	Ready to receive		device/process OK	Device ready to operate	None
4	Receiving		device/process OK	Device ready to operate	None
5	Printing		device/process OK	Device ready to operate	None
Buzzer (dark-grey), orange LED (light-grey)					
6	Charging state 30 %		device/process OK	Device is ready to operate/loading	None
7	Charging state 60 %		device/process OK	Device is ready to operate/loading	None
8	Charging state 100 %		device/process OK	Device is ready to operate/loading	None
9	Switch off by timer/Alert		advice/caution	Device switches itself automatically off	Run device
10	Switch off by timer		advice/caution	Device switches itself automatically off	Run device
11	Datalogger 90 % full		advice/caution	Device ready to operate, limited memory reserve	None Read out/clear data
12	Datalogger 100 % full		advice/caution	Device ready to operate, memory overflow	None Read out/clear data
13	End of paper		advice/caution	Device not ready, missing material	Refill printer paper
14	Battery empty		advice/caution	Device still works – can switch itself off at any time	Change batteries or loading rechargeable batteries
Buzzer (dark-grey), red LED (light-grey)					
15	Battery error		error	Device still works – wrong battery type loading, loading switches off	Insert correct rechargeable batteries
16	Datalogger error		error	Instruments error	Check datalogger by service
17	Transmission error		error	Incorrect transmission, e.g. wrong data sent	Data lines, examine connections
18	Protocol error		error	Incorrect transmission, e.g. wrong data sent	Data lines, examine connections
19	Print pin roll error		error	Device does not function any longer, top lid is open	Close top lid until it snaps
20	Printer head too hot		error	Print again possible only after cooling – data storage further possible	Switch off printer. Call service.
21	Instruments error		error	Device not ready	Call service