

Invented for life



BOSCH

Vivalytic MG, MH, UP/UU

**Qualitative Real-time PCR Test for the Detection of *M. genitalium*,
M. hominis, *U. parvum*/*U. urealyticum* at the Point of Care**

√ivalytic from Bosch –
The universal diagnostic platform.
Universal, intuitive, fast.



vivalytic

Vivalytic MG, MH, UP/UU

Qualitative Real-time PCR Test for the Detection of *M. genitalium*, *M. hominis*, *U. parvum*/*U. urealyticum* at the Point of Care

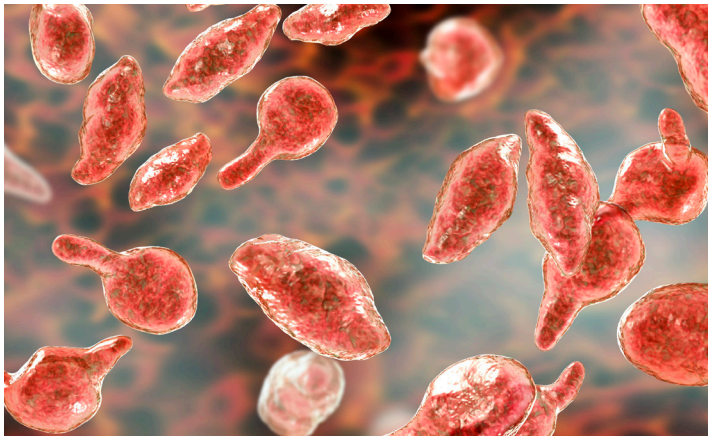
According to the World Health Organization (WHO), over 30 different bacterial species, viruses and parasites have been identified as being involved in the spread of sexually transmitted infections (STIs), with more than one million STIs acquired worldwide every day¹.

M. genitalium, *M. hominis*, *U. parvum*, and *U. urealyticum* belong to the group of human pathogenic bacterial species associated with STIs even though particularly *Ureaplasma* spp. are primarily considered as commensal organisms². All four bacterial species can be detected simultaneously with Vivalytic MG, MH, UP/UU, the new member of the Bosch Healthcare Solutions Vivalytic product portfolio. Since a test result of Vivalytic MG, MH, UP/UU is available

after one hour at the point of care no further transport of specimens to a specialized laboratory is necessary. The immediate result is beneficial both for the patient and for the containment of STIs.

Vivalytic MG, MH, UP/UU – Point of Care for STIs

- Time to result: in one hour
- Only a few steps from sample to result
- No transport of specimen necessary
- No further laboratory equipment needed
- Simultaneous identification of *Mycoplasma* spp. MG, MH, and *Ureaplasma* spp. UP/UU
- Clinician is offered the possibility to receive a POC result



Sample material

Swab (urethral, vaginal, cervical, rectal), urine

Volume

300 µl

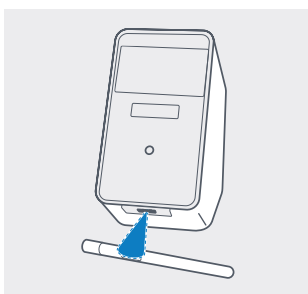
Detection method

Real-time PCR test

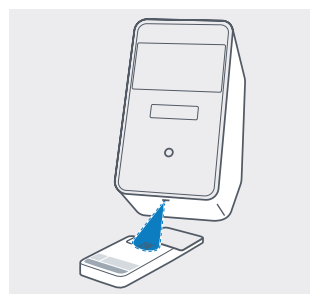
Detectable pathogens

- *Mycoplasma genitalium*
- *Mycoplasma hominis*
- *Ureaplasma parvum* and/or *Ureaplasma urealyticum*

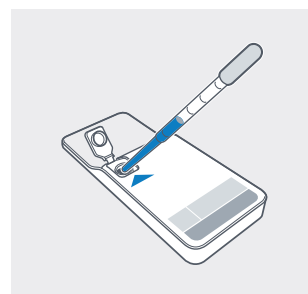
Vivalytic workflow: Only a few steps from sample to result



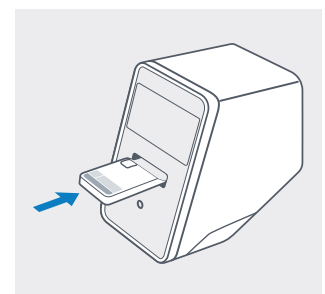
① Scan sample code.



② Scan cartridge code.



③ Insert the sample and close cartridge lid.



④ Insert cartridge. The test starts automatically.

Our biocontent cooperation partner is:

BioGX
Molecular Made Easy

Subject to technical modifications. Printed in Germany. Any color deviations are due to restrictions in the printing process. Printed on 100% chlorine-free bleached cellulose, produced in an environmentally friendly process. Not all products are available in all regions. Ask your local sales representative for availability in specific markets. For in vitro diagnostic use only.

Bosch Healthcare Solutions GmbH
Stuttgarter Str. 130, 71332 Waiblingen, Germany

¹WHO, Sexually transmitted infections (STIs). [https://www.who.int/news-room/fact-sheets/detail/sexually-transmitted-infections-\(stis\)](https://www.who.int/news-room/fact-sheets/detail/sexually-transmitted-infections-(stis)), Date of query 15.03.2022

²Waites et al., J Mol Diagn. 2012 Sep;14(5):437-50

The availability of the tests can differ regionally.